



3 Cherry Hinton Road
Teversham, CB1 9AQ

Guide price £425,000



3 Cherry Hinton Road

Teversham, CB1 9AQ

- Renovated bungalow
- 776 sqft / 72 sqm
- No upward chain
- Close to Addenbrookes & City Centre

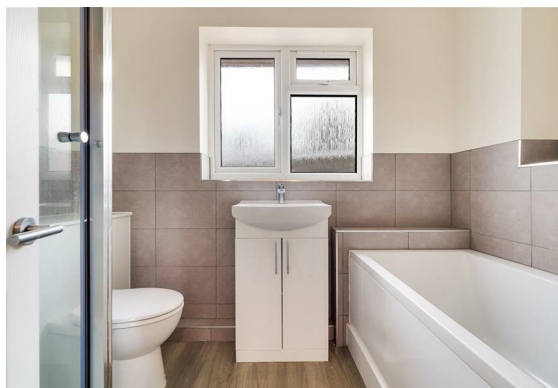
A spacious & much improved bungalow, benefitting from an updated boiler, electrics, refitted bathroom & new roof, the property enjoys a corner plot in this friendly village just east of the City.

This extended bungalow has been renovated & extremely well cared for since it was previously purchased in 2012. Additions to the property include updated facias, guttering, plastered ceilings & LED spotlights.

The accommodation comprises an entrance hall with loft access, & a storage cupboard housing a combi-boiler. The living room benefits from the morning sun & has a sliding door opening into a double glazed conservatory. The kitchen/dining room has a dual aspect & is fitted with a matching range of units, offering space/plumbing for various appliances.

There are 2 double bedrooms, bedroom 1 with attractive paneling & views to the rear. The refitted bathroom has a separate shower & bath, is complemented by part tiled walls & inset spotlights.

Outside the fenced front garden is mainly graveled & set nicely back from the road with a paved





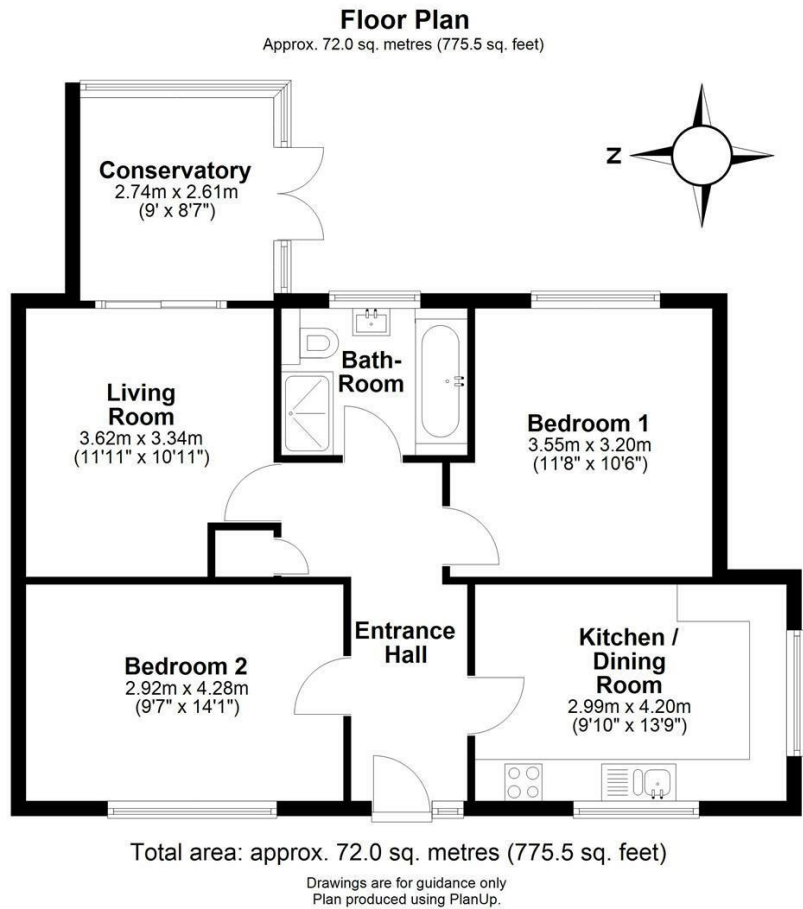
pathway to front door. The rear garden is block paved for ease of maintenance & has side access back to the front of N.3.

Teversham is a friendly village situated just a few miles east of the City Centre. There are some amenities within the village including a Church, a family friendly social club & a popular Indian restaurant. Neighbouring Cherry Hinton has a more comprehensive range of shopping facilities & there is also a Tesco superstore, a 5-minute drive from the property.

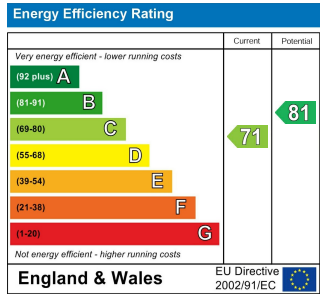
The village is well placed for access to Arm Headquarters (2 miles), Addenbrookes Hospital & the Biomedical Campus (3 miles). Bus services run regularly to & from the City Centre & there are good road links via the A14.

Teversham CofE Primary School maintains a 'Good' Ofsted rating & falls within the catchment area to Bottisham Village College.





Energy Efficiency Graph



Tenure: Freehold
Council tax band: C

These particulars, whilst believed to be accurate, are set out as a general outline only for guidance and do not constitute any part of an offer or contract. Intending purchasers should not rely on them as statements of representation of fact, but must satisfy themselves by inspection or otherwise as to their accuracy. No person in this firm's employment has the authority to make or give any representation or warranty in respect of the property.